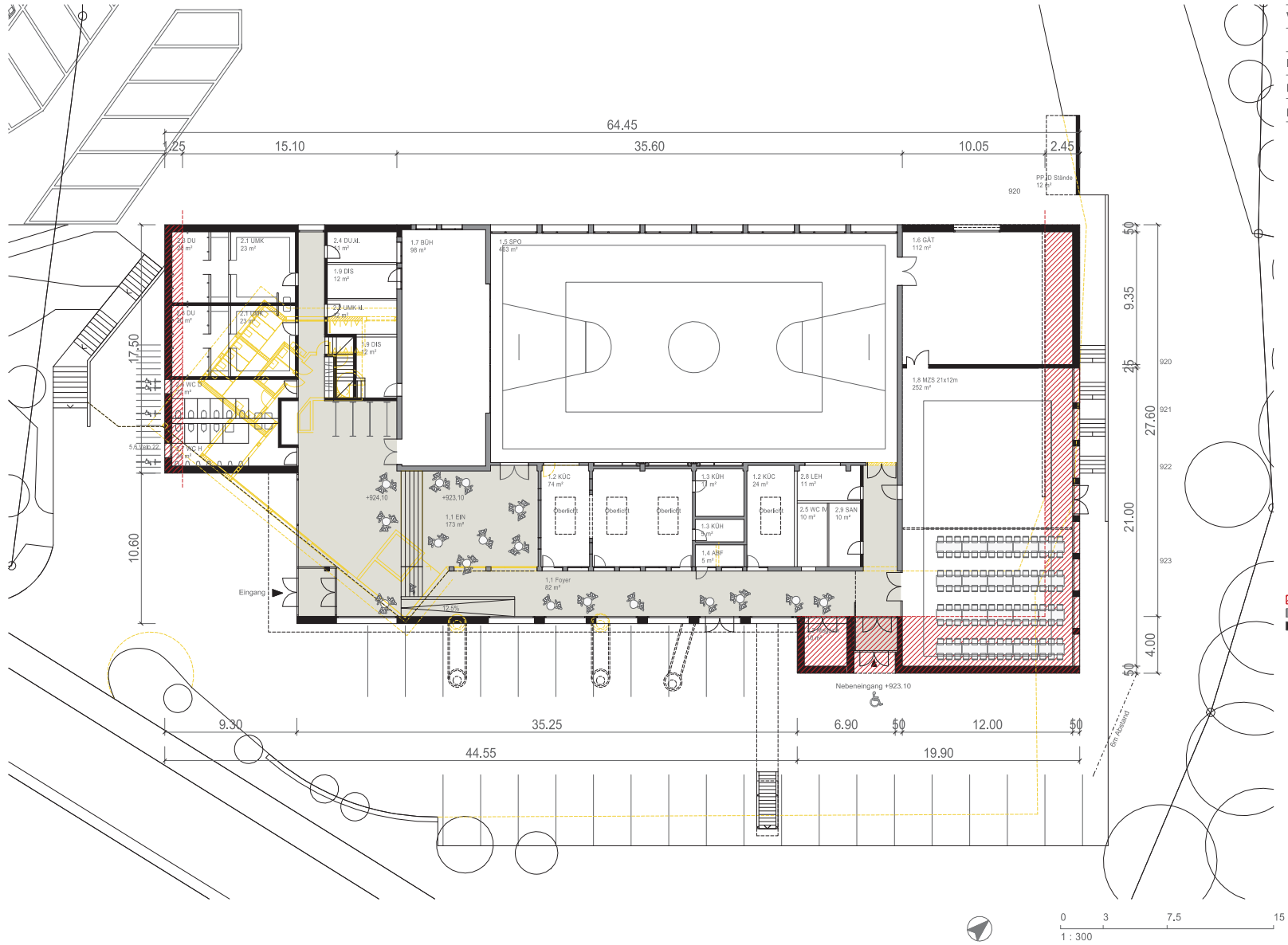


Variante 6

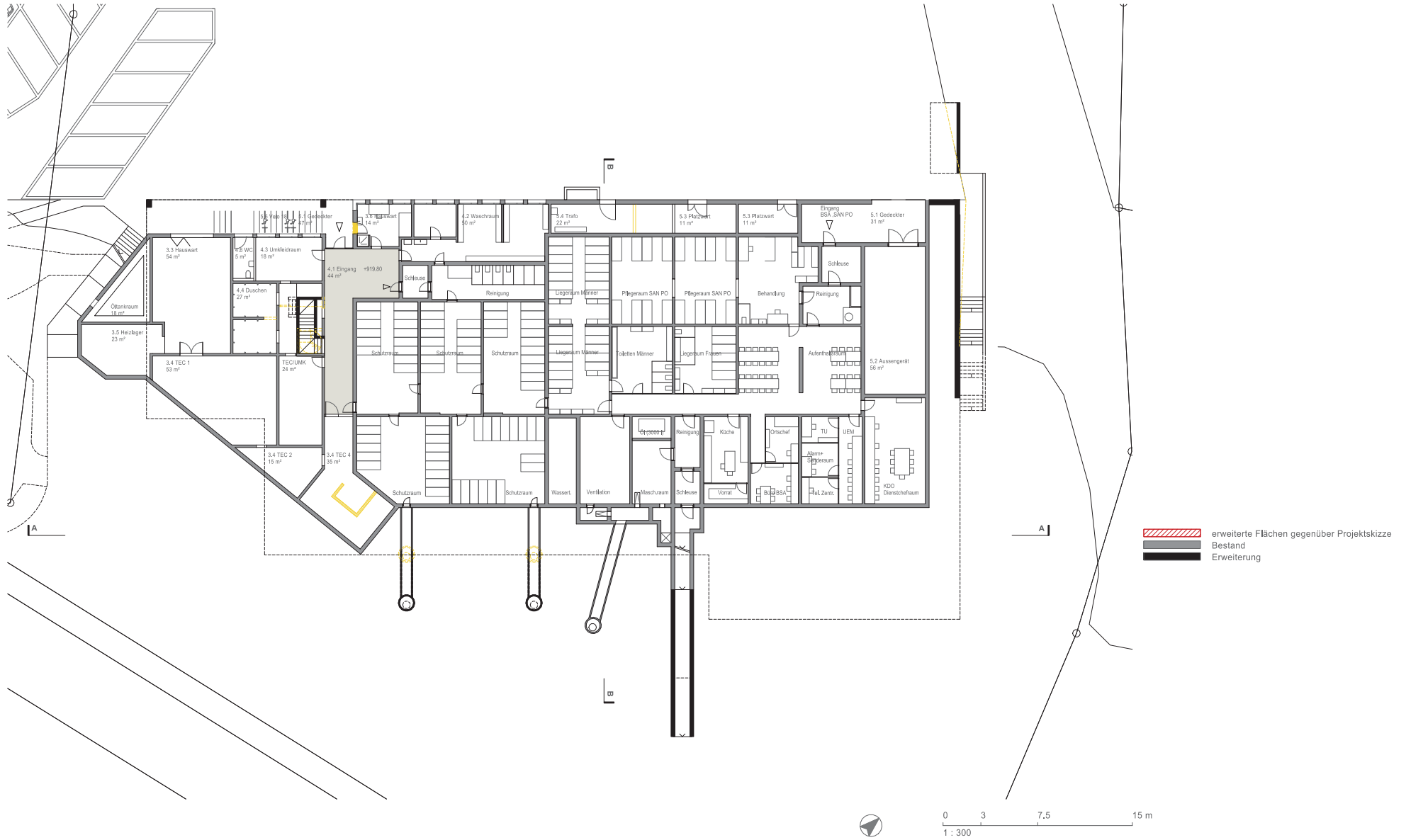
Grundriss Obergeschoss

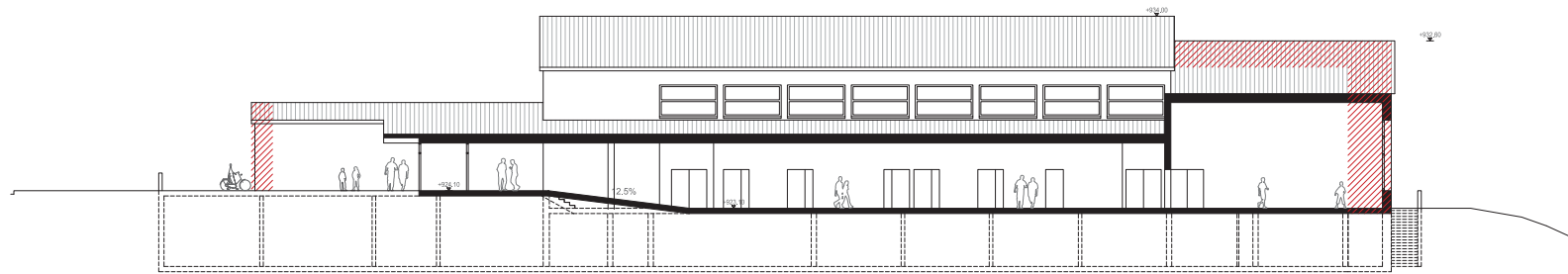


Volleyball

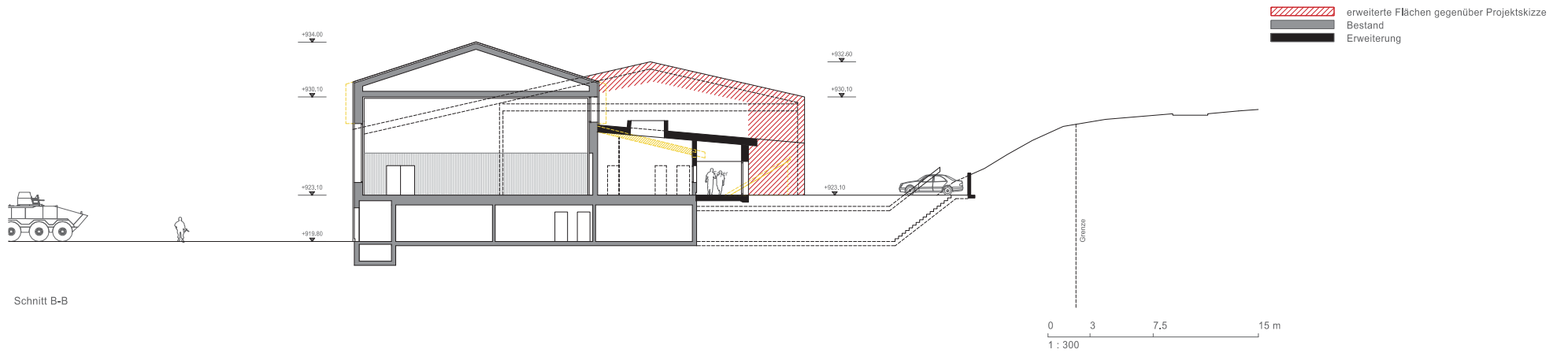
	Spielfeldgrösse	Sicherheitsabstände	Bruttofläche
International	18,0 x 9,0m	5,0m	34,0 x 19,0m
National		3,0m	24,0 x 15,0m
Regional		1,5m	21,0 x 12,0m

- erweiterte Flächen gegenüber Projektskizze
- Bestand
- Erweiterung





Schnitt A-A



Schnitt B-B